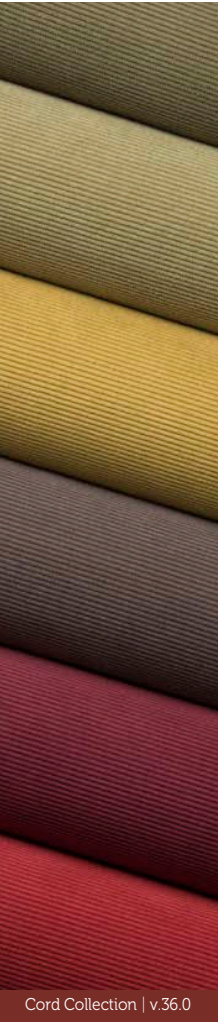


AGUA

PERFORMANCE UPHOLSTERY FABRICS

Cord Collection

A sophisticated and modern
textured corduroy upholstery fabric



Cord Collection | v.36.0

- Anti-Microbial
- Bleach
Cleanable
- Fire Retardant
Crib 5/IMO
- Stain Resistant
- Waterproof
- Martindale Abrasion
Severe Contract
- Phthalate
Free
- REACH
Compliant

Cord

A sophisticated and modern textured corduroy upholstery fabric

Perfect for:

Commercial, cruise, hospitality, leisure and senior living

Fabric Specifications

<i>Flame retardant</i>	BS7176 Crib 5, BS EN 1021-1:2006 162, BS5852 Crib 5, IMO Annex 1 Part 8.
<i>Anti-bacterial/Anti-fungal</i>	Resistant to microbial or fungal growth including Salmonella, E. Coli and MRSA.
<i>Waterproof</i>	Hydrostatic Head BS3424 > 1 metre.
<i>Martindale</i>	Severe Contract > 60,000.
<i>Stain resistant</i>	Excellent stain removal has been observed for grease, ink, blood, urine, coffee, iodine, betaidine, ketchup, chewing gum, chocolate, grape juice.
<i>Composition</i>	100% treated polyester.
<i>Breathable</i>	Moisture vapour permeable.
<i>Width</i>	142cm (56") wide.

Technical Information

- We recommend a minimum of 32 stitches per 10 cm (8 stitches per inch) and seams must have a minimum 12mm (0.5") bite on the fabric.
- Not suitable for use as removable loose covers.
- Please note that all fabric offered is subject to minor tolerance in respect of shade and other slight variations.
- Technical specifications may be amended, please check for the latest information.

- Please ask if you require a sample of the current batch available but be aware that stock can move quickly.
- Cord can colour co-ordinated with Agua faux leather collections to produce stunning furniture with dual textured finishes.
- Bespoke colours can be produced subject to minimum quantity orders.

Fabric Care

- Use a vacuum cleaner or soft brush to remove dust and solid particles.
- Always try cleaning products on a hidden piece of fabric to test suitability.
- Wipe frequently with a damp cloth to maintain the appearance of the fabric.
- All spillages should be removed immediately with a clean absorbent cloth.
- Poorly fixed clothing dyes, e.g. Denim, will cause permanent staining. Most stains can be removed using cold/warm water and a clean microfibre cloth.
- Stains from products containing oil and grease should be treated with a spirit based solution.
- Can be steam cleaned in situ.

- Can be cleaned with mild Hypochlorite solutions (up to 10,000 ppm of available chlorine - including Haz Tabs and Chlor-Clean) or Mineral Spirit for infection control purposes.
- If soap based cleaners are used, all soap residues must be rinsed from the fabric.
- Do not machine wash or dry clean.
- Remove all stains immediately before they set.

- Please refer to the Cord Fabric Technical Specifications PDF download on the Agua website for further details.
- Do not use solvents, chemical agents, waxes or polishes as this will damage the surface of the fabric.

Our Environmental Policy

Our products have always been phthalate free and REACH* compliant. Our processes are non-toxic and the methods used during manufacture and finishing ensure that potentially hazardous accidental cross contamination is minimised to the greatest degree possible. All our fabrics meet the stringent Oeko-Tex**

standards, regardless of origin, so are free from harmful chemicals and safe for human use.

* Registration, Evaluation, Authorisation and Restriction of Chemicals (EU regulation, 18th December 2006)

** See more www.oeko-tex.com

Samples and Enquires

You can contact us for samples, order enquiries or information about any of our fabric ranges here:

Agua Fabrics Ltd,
Hyde House,
The Hyde, London NW9 6LH
T +44 (0)20 8205 0050
E info@aguafabrics.com
www.aguafabrics.com



Certificate No. FS 531220

AGUA

PERFORMANCE UPHOLSTERY FABRICS



Cord Bluebell



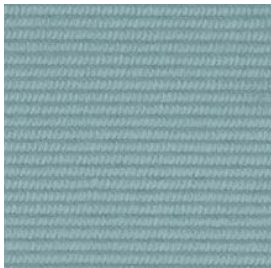
Cord Silver



Cord Coffee



Cord Fennel



Cord Duckegg



Cord Rose



Cord Sapphire



Cord Steel



Cord Mushroom



Cord Sage



Cord Teal



Cord Coral



Cord Ink



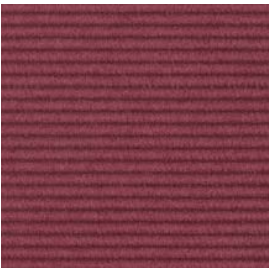
Cord Charcoal



Cord Mercury



Cord Olive



Cord Berry



Cord Cherry