

B U R O

COLLECTION

Fabric Specifications

FLAME RETARDANT

- ▶ BS EN 1021-1:2006 1&2 (Cigarette & Match)
- ▶ BS 7176 Low Hazard
- ▶ IMO Annex 1 Part 8

Also available to order:

- ▶ BS 7176 Medium Hazard (Crib5)
- ▶ BS 5852 Crib 5

Please note that Crib 5 option comes with stain resist and anti-microbial finish as standard.

BREATHABLE

Moisture vapour permeable

MARTINDALE

Severe Contract > 100,000

COMPOSITION

100% treated polyester

WEIGHT

Approx. 360GSM ±5%
(430GSM ±5% Crib 5)

WIDTH

140cm (55") wide

Cleaning

- ▶ Use a vacuum cleaner or soft brush to remove dust and solid particles.
- ▶ Wipe clean with a damp cloth or soap based cleaner. All soap residues must be rinsed from the fabric.
- ▶ Do not machine wash.
- ▶ Poorly fixed clothing dyes, e.g. denim, and biro pens will cause permanent staining.

Technical Information

- ▶ Please note that all fabric offered is subject to minor tolerance in respect of shade and other slight variations.
- ▶ Seam performance is dependent on construction and needle and thread type. We advise the correct sewing advice be taken.
- ▶ Technical specifications may be amended, please check for the latest information.

Samples and Enquires

You can contact us for samples, order enquiries or information about any of our other workplace fabric ranges here:

Agua Fabrics Ltd, Hyde House, The Hyde, London NW9 6LH

T +44 (0)20 8205 0050

E info@aguafabrics.com

aguafabrics.com

B U R O

COLLECTION



Martindale Abrasion
Severe Contract



Phthalate
Free



Cig&Match



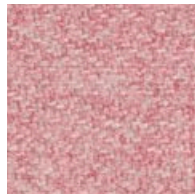
REACH
Compliant

B U R O

@work
by AGUA



@work by AGUA
Buro / Lilac



@work by AGUA
Buro / Orchid



@work by AGUA
Buro / Old Rose



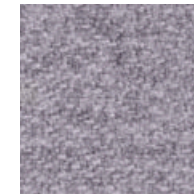
@work by AGUA
Buro / Gold



@work by AGUA
Buro / Pebble



@work by AGUA
Buro / Silver



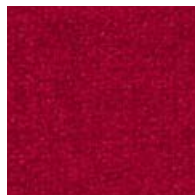
@work by AGUA
Buro / Pearl



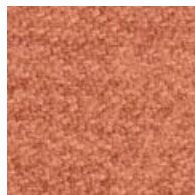
@work by AGUA
Buro / Sky



@work by AGUA
Buro / Thistle



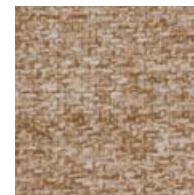
@work by AGUA
Buro / Cherry



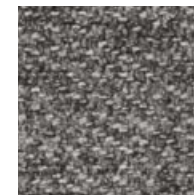
@work by AGUA
Buro / Terracotta



@work by AGUA
Buro / Mustard



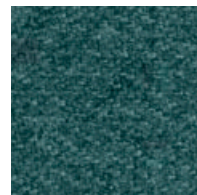
@work by AGUA
Buro / Latte



@work by AGUA
Buro / Pewter



@work by AGUA
Buro / Lead



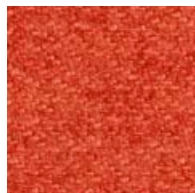
@work by AGUA
Buro / Forest



@work by AGUA
Buro / Aubergine



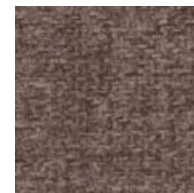
@work by AGUA
Buro / Wine



@work by AGUA
Buro / Brick



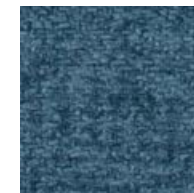
@work by AGUA
Buro / Olive



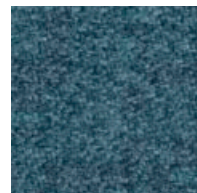
@work by AGUA
Buro / Mink



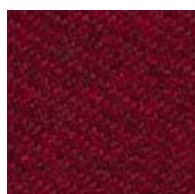
@work by AGUA
Buro / Steel



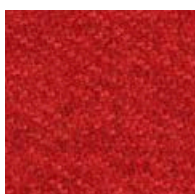
@work by AGUA
Buro / Marine



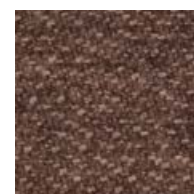
@work by AGUA
Buro / Petrol



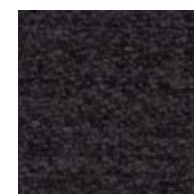
@work by AGUA
Buro / Claret



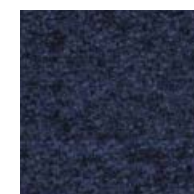
@work by AGUA
Buro / Tomato



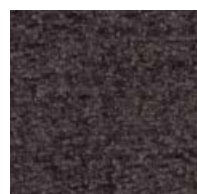
@work by AGUA
Buro / Truffle



@work by AGUA
Buro / Graphite



@work by AGUA
Buro / Sapphire



@work by AGUA
Buro / Raven

WORKPLACE FABRICS

WORKPLACE FABRICS