

Mystique

Stunning embossed faux leather for panels and upholstery.

Perfect for:
Commercial, cruise, hospitality, leisure and senior living.

Fabric Specifications

Flame retardant	BS7176 Crib 5, BS EN 1021-1:2006 1&2, BS5852 Crib 5, IMO Annex 1 Part 8.
Anti-bacterial/Anti-fungal	Resistant to microbial or fungal growth including Salmonella, E Coli and MRSA.
Waterproof	Hydrostatic Head BS3424 > 1 metre.
Martindale	Severe Contract > 100,000
Stain resistant	Excellent stain removal has been observed for grease, ink, blood, urine, coffee, iodine, betadine, ketchup, chewing gum, chocolate, grape juice.
Composition	Titan & Pegasus - 2% Vinyl Acrylic, 74% PVC, 12% PES, 12% cotton Atlas - 73 % PVC and 27% cotton.
Width	140cm (55") wide.
Pattern repeat	Titan and Atlas - no repeat. Pegasus - 11cm horizontal.

Technical Information

- We recommend a minimum of 32 stitches per 10cm (8 stitches per inch) and seams must have a minimum 12mm (0.5") bite on the fabric.
- Not suitable for use as removable loose covers.
- Please note that all fabric offered is subject to minor tolerance in respect of shade and other slight variations.
- Technical specifications may be amended, please check for the latest information.
- Please ask if you require a sample of the current batch available but be aware that stock can move quickly.
- Bespoke colours can be produced subject to minimum quantity orders.

Fabric Care

- Poorly fixed clothing dyes, e.g. Denim, will cause permanent staining. Most stains can be removed using cold/warm water and a clean microfibre cloth.
- Always try cleaning products on a hidden piece of fabric to test suitability.
- Wipe frequently with a damp cloth to maintain the appearance of the fabric.
- All spillages should be removed immediately with a clean absorbent cloth.
- Use a vacuum cleaner or soft brush to remove dust and solid particles. Can be steam cleaned in situ.
- Stains from products containing oil and grease should be treated with a spirit based solution.
- If soap based cleaners are used, all soap residues must be rinsed from the fabric.
- Do not machine wash or dry clean.
- Remove all stains immediately before they set. Do not use marker pens on the back of the fabric.
- Do not use solvents, chemical agents, waxes or polishes as this will damage the surface of the fabric.
- Can be cleaned with mild Hypochlorite solutions (up to 10,000 ppm of available chlorine - including Haz Tabs and Chlor-Clean) or Mineral Spirit for infection control purposes.
- Please refer to the Mystique Fabric Technical Specifications PDF download on the Agua website for further details.

Our Environmental Policy

Our products have always been phthalate free and Reach* compliant. Our processes are non-toxic and the methods used during manufacture and finishing ensure that potentially hazardous accidental cross contamination is minimised to the greatest degree possible. All our fabrics meet the stringent Oeko-Tex** standards, regardless of origin, so are free from harmful chemicals and safe for human use.

* Registration, Evaluation, Authorisation and Restriction of Chemicals (EU regulation: 18th December 2006)

** See more: www.oeko-tex.com

Samples and Enquires

You can contact us for samples, order enquiries or information about any of our fabric ranges here:



Certificate No. FS 531220

Agua Fabrics Ltd,
Hyde House,
The Hyde, London NW9 6LH
T +44 (0)20 8205 0050
E info@aguafabrics.com
www.aguafabrics.com



Mystique Collection

A dramatic range of embossed faux leather



Mystique Collection | v12.4



Anti-Microbial



Bleach
Cleanable



Fire Retardant
Crib 5/IMO



Stain Resistant



Waterproof



Martindale Abrasion
Severe Contract



Phthalate
Free



REACH
Compliant

Agua Fabrics Ltd,
Hyde House, The Hyde,
London NW9 6LH
T +44 (0)20 8205 0050
E info@aguafabrics.com
www.aguafabrics.com

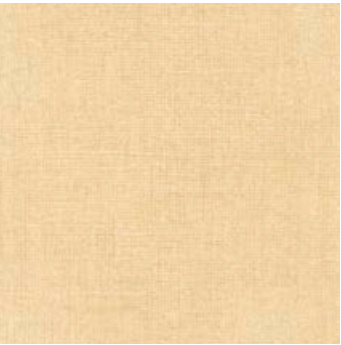
AGUA

Mystique

► TITAN



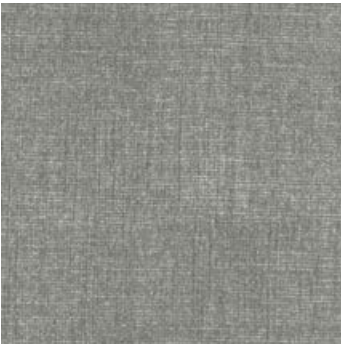
Mystique Titan Pearl



Mystique Titan Honey



Mystique Titan Gold



Mystique Titan Pewter



Mystique Titan Sage



Mystique Titan Taupe



Mystique Titan Truffle



Mystique Titan Platinum



Mystique Titan Emerald



Mystique Titan Wine



Mystique Titan Petrol



Mystique Titan Midnight

AGUA

Mystique

► PEGASUS



Mystique Pegasus Silver



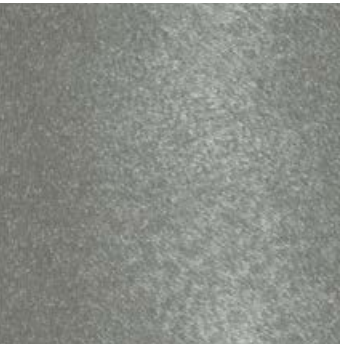
Mystique Pegasus Pearl



Mystique Pegasus Gold



Mystique Pegasus Sage



Mystique Pegasus Pewter



Mystique Pegasus Truffle

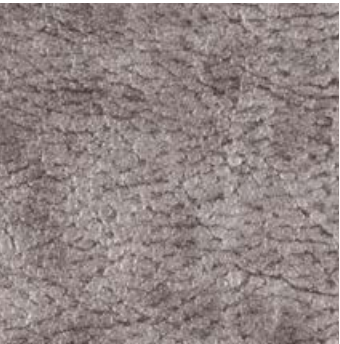
► ATLAS



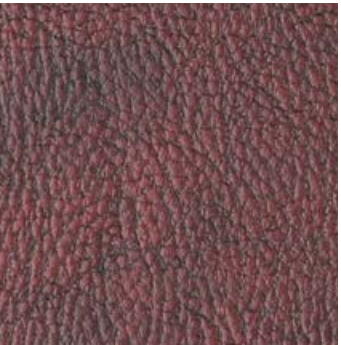
Mystique Atlas Gold



Mystique Atlas Copper



Mystique Atlas Pearl



Mystique Atlas Wine



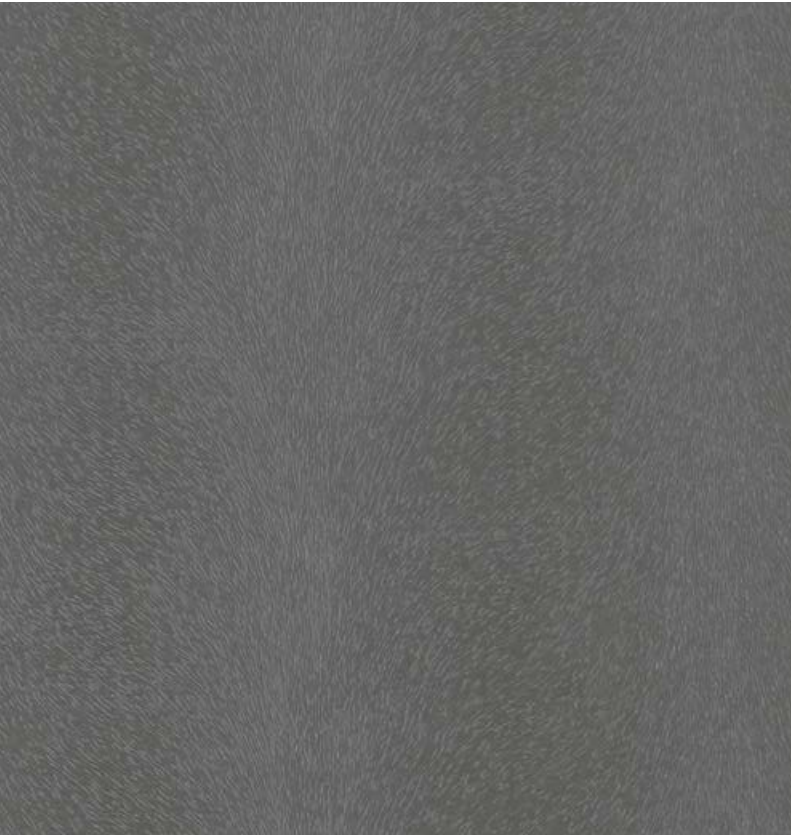
Mystique Atlas Midnight



Mystique Atlas Petrol

AGUA

Mystique



Mystique Pegasus Truffle



Mystique Atlas Petrol



Mystique Titan Midnight